

form POS 960

The top of the new line
of Olivetti PC POS systems.

FORM POS 960 is the perfect combination of **design, technology and reliability**, designed to effectively respond to the most **complex needs of the Retail and Hospitality markets**.

The **design's elegance and ergonomics** characterize the **robust aluminum structure**.

The capacitive and multi touch 15" touch screen (TRUE FLAT) monitor, combined with the **latest Intel® processor**, guarantee **high levels of performance** even in environments that use the most advanced management applications.

The SSD (Solid State Drive) technology of the hard disk, which allows **high performance and low power consumption**, ensures the system further operational efficiency and reliability.



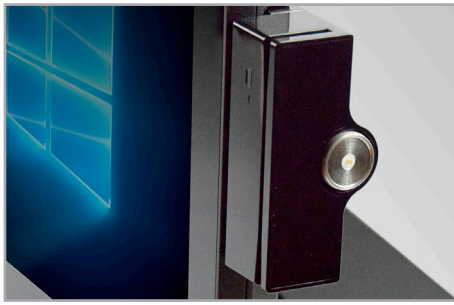
HIGH PERFORMANCE OFFERED BY THE INTEL® CORE™ I3 PROCESSOR, 2.7 GHZ

SSD-TYPE MASS STORAGE WITH 128 MB OF CAPACITY

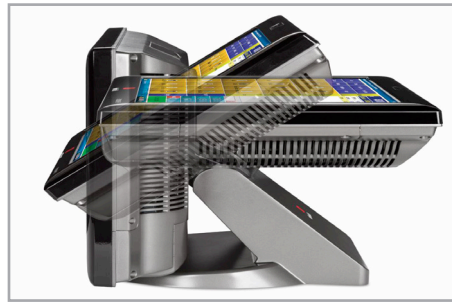
TRUE FLAT IP65 FRONT MONITOR RESISTANT TO WATER AND DUST

FRONT MONITOR WITH TILTABLE ANGLE (0° -90°)

POSSIBILITY TO INTEGRATE A SECOND 10.1" DISPLAY, OR A 2X20 CUSTOMER DISPLAY, AN MSR OR AN MSR WITH I-BUTTON



Magnetic card reader with i-button optional



Display with tiltable angle (0° -90°)



Easy access to communication ports

TECHNICAL SPECIFICATIONS

MAIN BOARD

CPU	Skylake-S Intel® Core™ i3-6100TE processor (Dual-core, 4M Cache, 2.7 GHz, TDP 35 watt)
Graphic	Intel® HD Graphics
System memory	4GB, DDR4 SO-DIMM 1866/2133MHz x 1
Compatible Operating Systems	Windows 10 IoT Enterprise Value, Windows Embedded POSReady 7, Windows 7, Professional for Embedded Systems, Windows Embedded 8.1 Industry

TOUCH DISPLAY

Dimensions	15.1" 4:3 TFT LCD
Brightness	250 nit
Resolution	1024 X 768 pixel
Panel Backlight Type	LED - 50K hours of life
Front Panel Type	Bazel-free
Tilt Angle	0°-90°
Touch Screen	P-cap Multi-touch - with 7H hardness over lens

STORAGE

Interfaces	2 x SATA3 (6.0Gb/s)
SSD/HDD	128GB Slot mSATA x 1(per SSD) Optional: 320GB - 2.5"HDD x 1

I/O PORTS

Serials	Serial ports x 6: DB-9 Pin9 con RI/5V/12V selectable by BIOS COM 1/2: RS-232, RJ-50 with convert to DB-9 COM 3/4: RS-232/422/485 selectable by BIOS, RJ-50 with convert to DB-9 COM 5: RS-232 reserved for customer display 2x20 VFD COM 6: RS-232, reserved
USB	3 x USB 2.0 1 x USB 3.0
LAN	1 x Gigabit RJ-45 Ethernet Wake on LAN supported
Cash Drawer	1 x RJ12 - supports 12V/24V DC
Audio	2 x Speakers 2W
DP / HDMI	1 x mini Display Port (supporting active converter cable to VGA, DVI, HDMI)
DC-IN	24VDC input x 1, 4pins jack
DC-OUT	12VDC x 1/1A output

MISCELLANEOUS

Color	Black
Material	Aluminum
Mounting mechanism	Supports VESA Mount
Safety and Marks	CE / WEEE / RoHS
Dimensions (WxDxH)	36.5 x 26 x 35 cm
Net Weight / Gross Weight	6 kg / 8.6 kg
Operating Temperature	With extended temperature SSD/mSATA/ RAM/Adapter: from -20°C to 60°C with 0.7m/s air flow With standard system configurations: from 0°C to 50°C with 0.7m/s air flow
Storage Temperature	from -40°C to 85°C
Humidity	95% - 40°C (not condensing)

Performance relates to use of the product under optimal conditions.
Right reserved to modify technical specifications.
Registered trademarks are the property of their respective owners.
FORM POS 960 is distributed by Olivetti S.p.A.
(02/2018) - Code: 49698-00-w