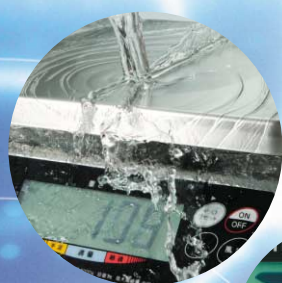


# TCW-WP



Fully Waterproof Tabletop Weight Checker

*Various Functions Contained in the Compact Body!*



## **Checker function**

This tells you the appropriate quantity with reference to the preset quantity with a bar graph and a buzzer. It enables faster weight checking in product inspection work.



## **Ranking function**

This allows you to rank products according to weight by presetting mass values as required —this helps streamline sorting work.



## **Fixed weight check function\***

This indicates the weight difference of each product from the preset reference weight. It prevents weight check losses and improves yields.

***Searching for  
a New Balance***

\*This function is not supported in EU approved version TCW-WP 06A/15A.



# Easy-to-use Super Checker!

## Checkpoint 1 Water- and dust-proof design

The body, which is made entirely of a stainless-steel sheet, is fully waterproof, in compliance with the world's highest protection standard (IP68), and is also washable. As such, it is suitable for use in any marine product processing shop.

\*IP68 waterproofness means that it is also fully dustproof and that its waterproof performance can be maintained even when the instrument is placed underwater at a depth of 1 meter for 24 continuous hours.



## Checkpoint 2 The clean design makes it easily cleanable

The smooth body is dust repellent. The tray and the receptacle are easily removable for cleaning without tools.

This easy-clean design makes it simple to ensure that the instrument is kept constantly clean and allows you to provide the customer with "safe and secure" products.



## Checkpoint 3 Extra-large display



The displayed characters are as large as 13.5mm in width and 30mm in height. This eliminates the problem of illegibility and reduces worker fatigue at the worksite.

## Checkpoint 4 Dual power sources

It operates on dry cells that allow it to be operable anywhere; the A/C adapter also enables it to be connected to a wall socket.

\*Four size D (alkaline) dry cells are required to enable 1400-hour operation—the use of the AC power source makes the instrument non-watertight.

### IP Standards

They are a code indicating the level of waterproof and dustproof performance defined on the basis of JIS (Japanese Industrial Standards) C0920 and IEC (International Electrotechnical Commission) 529. They are widely applicable around the world.

## Other functions and characteristics

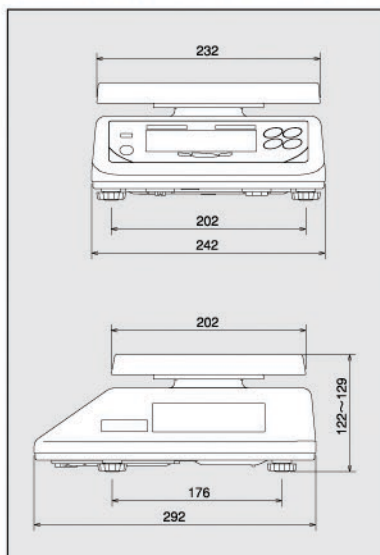
### ● Antivibration function

Prevents flickers of the display by mitigating the effect of wind or any other source of vibration.

### ● Compact design

The lowered overall height (122mm) improves the work efficiency by facilitating the loading/unloading of objects to and from the weighing tray.

### ■ External view with dimensions



### ■ Specifications

Product name	TCW-WP-06	TCW-WP-06A	TCW-WP-15A
Capacity	6kg	6kg	15kg
Calibration (Automatically switchable)	1g (0~6kg)	2g (0~6kg)	5g (0~15kg)
Gross tare subtraction	6.0kg	2.990kg	7.475kg
Weight	3.7kg		
Measurement method	Electric resistance wire type load cell		
Dimensions	242(W)×292(D)×122(H)mm		
Tray size	232(W)×202(D)mm		
Operating temperature	-10°C~40°C		
Dust-/water-proof	IP68 compliance		
Character size	LCD (liquid-crystal display), 13.5 (W)×30 (H) mm		
Display symbols	"Net weight," "Stability," "Zero point," "Battery," "Bar-graph," "Functions"		
Functions	"Reset to zero-point," "Single-touch net-weight indication," "Automatic switch-off," "Antivibration," "Multifunctions: checker, ranking, Fixed weight check"		
Power	Four size D batteries (attached)* or dedicated A/C adapter (option)		
Battery life	Continuous 1400-hr operation (use alkaline cells)		

Note\*: Actual battery life performance depends on the manufacturer specification, storage conditions, and/or use environment.



\* Specifications are subject to change without notice.

### DIGI Belgium nv

Neerlandweg 7  
2610 Wilrijk  
België  
TEL: +32 3 325 81 01  
FAX: +32 3 325 85 88  
www.digieu.eu

### DIGI Nederland bv

Impuls 73-75  
1446 BC  
Nederland  
TEL: +31 299 405 555  
FAX: +31 299 642 581  
www.digieu.eu